



OPUNTIA BIOCOMPLEX™ SH

FUNCTIONAL POLYSACCHARIDES
BLEND FOR SKIN BARRIER SUPPORT



INCI NAME: Opuntia ficus-indica stem extract,
Maltodextrin

OPUNTIA BIOCOMPLEX™ SH is a powder extract obtained from the juice of Opuntia cladodes, containing a blend rich in mucilage and low molecular components (mannitol, lactic acid, pascidic acid, eucomic acid).

STANDARDIZATION: Polysaccharides

PARTICULAR SIGN: Natural Origin Index
(ISO 16128):1

Sustainable ingredient from co-products with
a circular economy process

SKIN BARRIER MOISTURIZATION

TARGET: DRY SKIN

**RECOMMENDED USAGE
CONCENTRATION**

2-5%

Maintaining skin barrier integrity is a constant challenge in modern life. Daily cleansing routines, frequent use of surfactant-based products, and chronic exposure to environmental aggressors can progressively compromise the skin barrier, leading to dryness, impaired function, microbiome imbalance, and increased skin reactivity. As a consequence, skin may become more fragile, less able to retain moisture, and more prone to visible signs such as roughness, flaking, and discomfort. This makes hydration, barrier protection, and skin-restoring support increasingly important goals in modern cosmetic care.

COSMETIC BENEFITS

**Clinically
Proven**



**SHORT AND
LONG-TERM
HYDRATION**



**PROTECTION FROM
THE IRRITATIVE
ACTIVITY OF
SURFACTANTS**



**IMPROVEMENT
OF SKIN BARRIER
FUNCTION**



**MICROBIOME-
FRIENDLY ACTIVE
INGREDIENT**

APPLICATIONS



**SKIN AND
SCALP CARE**



TOILETRIES



SUN CARE

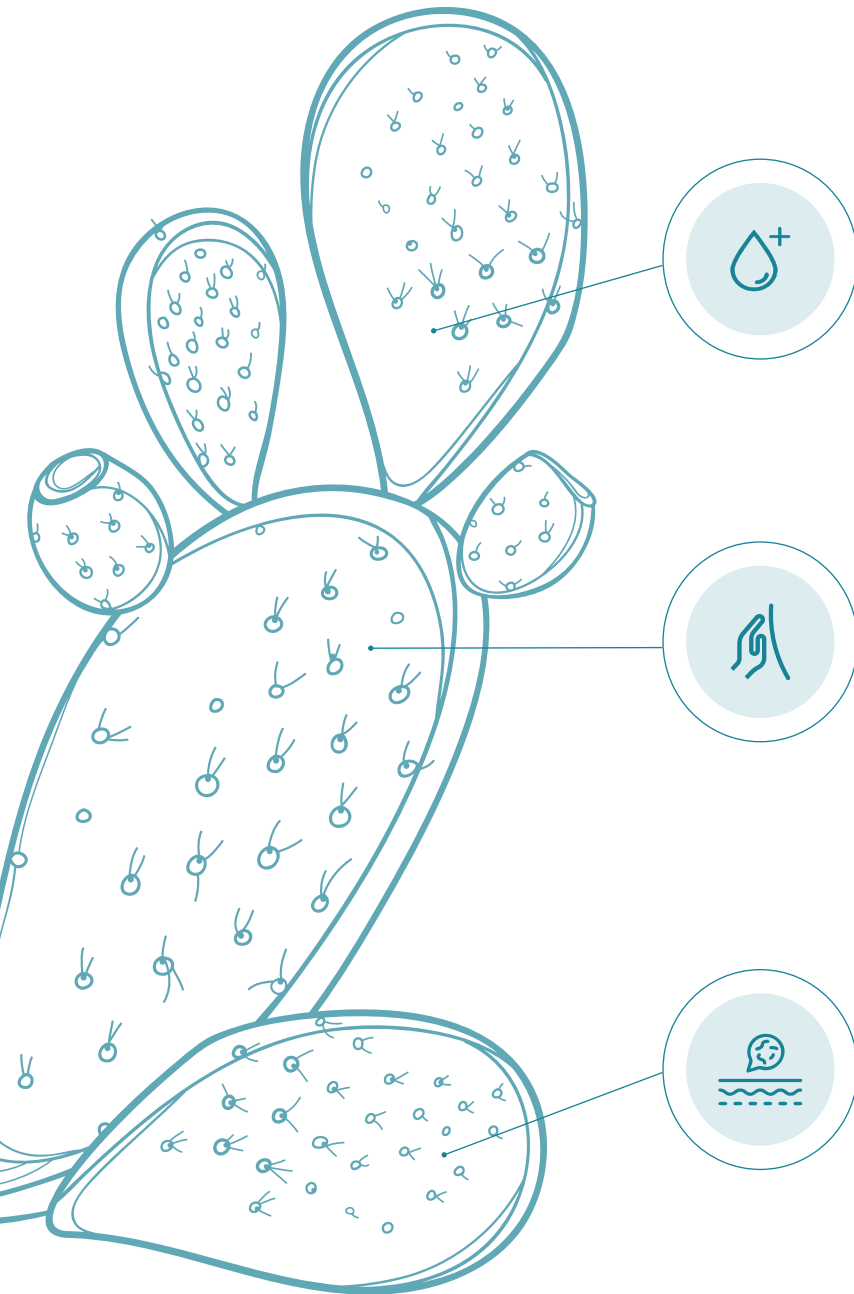


MAKE-UP



WHAT IT DOES

OPUNTIA BIOCOMPLEX™ SH has been evaluated through in vitro and clinical studies for its activity on skin hydration, barrier protection in leave-on and rinse-off formulas, and microbiome balance.



SHORT- AND LONG-TERM MOISTURIZATION

CLINICALLY EVALUATED IN A LEAVE-ON FORMULA

- Provides both immediate and long-lasting skin moisturization
- Improves skin smoothness over time
- Helps reduce superficial dryness and flaking

BARRIER PROTECTION

CLINICALLY EVALUATED IN A RINSE-OFF FORMULA

- Reinforces skin barrier function after cleansing
- Helps reduce TEWL
- Protects skin from surfactant-induced irritation

MICROBIOME-FRIENDLY ACTIVITY TESTED IN VITRO

- Supports the growth of beneficial skin bacteria acting as a prebiotic
- Counteracts the growth of pathogenic skin bacteria
- Helps maintain microbiome balance



FORMULATIONS

MOISTURIZING FACE CREAM

PHASE	INCI/PCPC	%
A	Arachidyl alcohol, behenyl alcohol, arachidyl glucoside	3
	Sorbitan stearate	2
	Cetyl Alcohol	1
	Cynara cardunculus (artichoke) seed oil	1
	Caprylic/Capric Triglyceride	2,5
	Hydrogenated coconut oil	5,5
	Elais guinnensis oil	2
	Dimethicone	1
Polyacrylate Crosspolymer-6	0,5	
B	Glycerin	3
	Hydroxyacetophenone	0,8
	Disodium EDTA	0,1
	Aqua/Water	74,2
C	Opuntia ficus-indica stem extract, Maltodextrin	2,5
	Hydroxyethyl acrylate/Sodium acryloyldimethyltaurate copolymer and squalane and polysorbate 60	0,5
D	Phenoxyethanol	0,3
	Sunflower seed oil, tocopherol	0,1
	Parfum/Fragrance	qs

NATURAL HAIR CONDITIONER

PHASE	INCI/PCPC	%
A	Aqua/Water	79,6
	Glycerin	4
	Cetearyl alcohol, behentrimonium chloride, guar hydroxypropyltrimonium chloride, stearylpropyl dimethylamine, argania spinosa kernel oil, cocos nucifera (coconut) oil, citric acid, cetearyl glucoside	7,2
B	Opuntia ficus-indica seed oil	1
	Tocopheryl acetate Dicaprylyl ether	0,2 1
C	Opuntia ficus-indica stem extract, maltodextrin	1,5
	Aqua/Water	4,5
D	Benzyl alcohol, Glyceryl caprylate, Glyceryl Undecylenate	1
	Parfum/fragrance	qs